

SHC-20280C/I

2MP AHD Internal Intelligent Camera



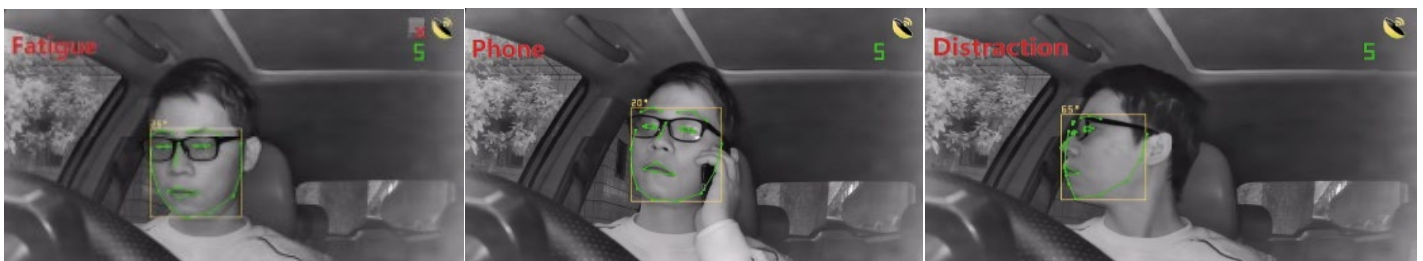
Key Features

- 2MP resolution CMOS Sensor
- 2.8mm lens
- True Day/Night with IRC
- 6 x 940nm LED 3m illumination - Below 0.3W EN62471 certified
- 120dB Wide Dynamic Range
- Facial recognition & behavioral detection
- SD Card Recording (max 128GB)
- Indoor Only

Ordering Information

SHC-20280C/I 2MP 2.8mm Driver Monitoring camera T D/N IR LEDs, AC575 Wi-Fi Hotspot calibration Tool

Illustrations



Specifications

SHC-20280C/I

VIDEO	
Imaging Device	1/2.9" Colour CMOS Sensor
Resolution	2MP 1080p
Min. Illumination	Colour: 0.01 Lux @ F1.2 / Monochrome 0.0Lux
IR LEDs	6 x 940nm, 3m Illumination
Video Output	1 V pk-pk 75Ω
Frame Rate	25fps (PAL)/30fps (NTSC)
Gain	Auto
White Balance	Auto
BLC	Yes
Wide Dynamic Range	120db
S/N Ratio	50db (AGC off)
LENS	
Focal Length	2.8mm
Field of View (H x V)	108° (H) x 56° (V)
Lens / Mount Type	Fixed Iris / Board-in type
ALARM SETTINGS	
Audible Alarm	Internal 3W speaker, Output, external speaker supported
Audible Volume	Level 0 - 5
Alarm Output	1 external output, Sd Card recording (Max 128GB), Wi-Fi/GPS alarm out to local monitor, CMS & Mobile app
Detection	Facial Recognition (max 400 faces), fatigue, smoking (abnormal behavior), phone use, distraction
Detection Range	0.5 – 12m
Detection Zones	Adjustable colour zones (image overlay, red, yellow, green)
Audible Alarm	Output, external speaker supported, 6 optional tones
COMMUNICATION	
Wi-Fi Module	Option
GPS Module	Option
Mobile App	LAN communication via ONVIF Protocol
ENVIRONMENTAL	
Operating Temp/Hum	-20°C ~ +70°C /10-95% RH
Storage Temp/Hum	-40°C ~ +85°C /10-95% RH
Vibration Resistant	5.9G (ISO 16750.3)
ELECTRICAL	
Power	10 - 32V DC, 5W
Power & Video Connector	2 x 4PIN Aviation options, cable 50cm
MECHANICAL	
Colour/Material	Black, Metal
Weight	200g
Dimensions (W x H)	110*86.5*64 mm
CERTIFICATION	
CE/UKCA	

Customers who bought our External Box Cameras also viewed:



Stortech AI Pedestrian Detection Camera

- SHB-10280T



Stortech 360° 7\"/>

- SMF-0740/360H



Stortech AI Dual Thermal/Optical Camera

- STB-20800T

Stortech Electronics Ltd

Unit 2, Spire Green Centre, Pinnacles,
Harlow, Essex
CM19 5TQ

+44 (0) 1279 451100

www.stortech.co.uk sales@stortech.co.uk



Stortech Electronics Ltd



Stortech Electronics Ltd